

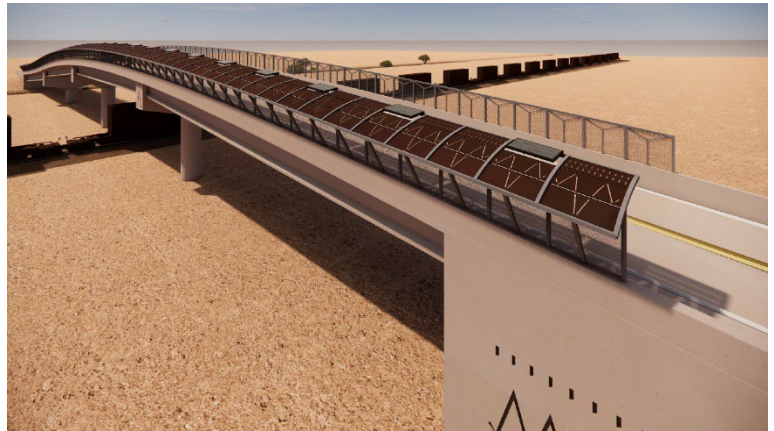


# Diamond Creek Road Overpass

## Purpose

The Diamond Creek Road Overpass project will improve safety for pedestrians, drivers, and cyclists by constructing a new overpass to carry the roadway over the BNSF railroad tracks. The project also includes fencing along the tracks south of Peach Springs.

The overpass was first identified as a priority in tribal planning documents more than 20 years ago.



Rendering for illustration purposes only. Subject to change.

In December 2024, the Federal Railroad Administration awarded the tribe a \$22.9 million grant through the Railroad Crossing Elimination program. Funds from this federal grant program must be spent on design and construction of projects that eliminate traditional at-grade railroad crossings like the one currently in place on Diamond Creek Road.

## Benefits

- **Creates a new, safe route for pedestrians.** A shaded sidewalk on the overpass will provide a protected route for pedestrians and wheelchair users to cross the railroad tracks. They will no longer need to use the travel lanes or the unpaved shoulders of the road. It will also connect to a new walking path along Diamond Creek Road north of SR-66.
- **Improves connectivity for drivers.** The new overpass will eliminate delays caused by passing trains, making travel more predictable and eliminating wait times for motorists.
- **Discourages unsafe track crossings.** Ground-level fencing along the railroad tracks will help prevent unauthorized crossings, improving safety for everyone in the area.

## Current Stage

	Planning	Design and Permitting	Construction	Complete
<b>Diamond Creek Road Overpass</b>		•		

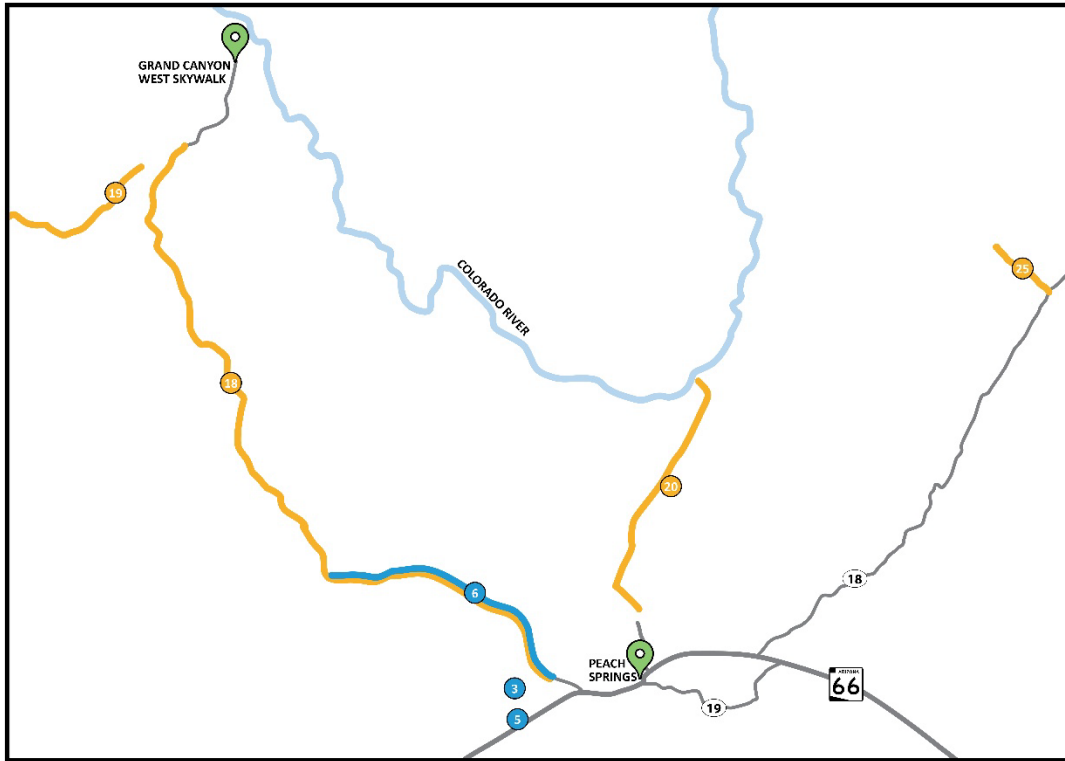
**Hualapai Moving Forward** is a transformational program bundle of more than 30 projects to enhance the quality of life for all Hualapai and preserve the tribe’s heritage for future generations. The program includes projects for transportation, water, community recreation, tribal facilities, as well as capacity building/planning, operations, and maintenance.



Learn more:  
[HualapaiMovingForward.org](https://HualapaiMovingForward.org)



# Regional Projects

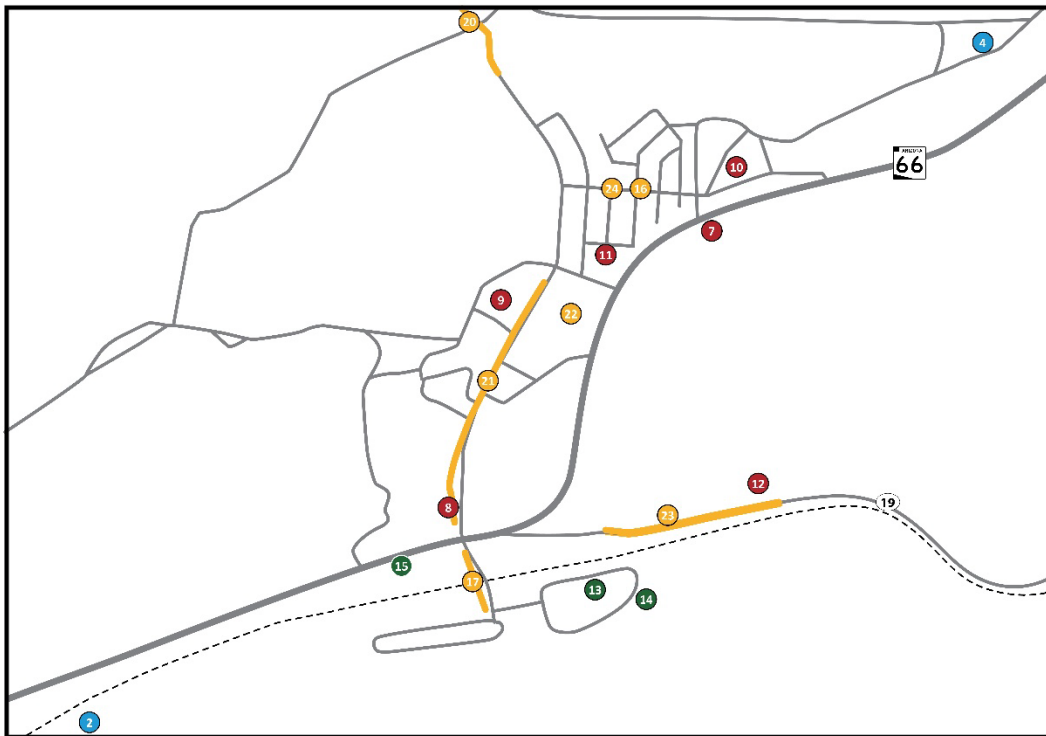


12.1.25 Subject to change based on field conditions and funding. Not to scale.

**Legend:**

- WATER AND SEWER PROJECTS**
    - 1 Hualapai Water Rights Pipeline Planning Including Design and Environmental - NOT SHOWN ON MAP
    - 2 Sewer Lagoon No. 6
    - 3 Truxton Aquifer Well
    - 4 Water Storage Tanks
    - 5 Well No. 1 Piping Replacement
    - 6 West Water / Peach Springs Cross Connection
  - TRIBAL FACILITIES**
    - 7 Administration Building & Associated Infrastructure
    - 8 Pop's Laundry Facility and Ped Bridge
    - 9 Public Safety Complex
    - 10 Public Services Annexes
    - 11 Re-purpose Exit Station 1
    - 12 Transportation Complex
  - COMMUNITY RECREATION**
    - 13 Rodeo Circle Park
    - 14 Sports Complex
    - 15 Hualapai Veterans Park
  - TRANSPORTATION (ROADS, PATHS AND SIDEWALKS)**
    - 16 Baseline Roadway Maintenance
    - 17 Diamond Creek Road Overpass
    - 18 Buck & Doe Road
    - 19 Diamond Bar Road (Safety Project)
    - 20 Diamond Creek Road
    - 21 Diamond Creek Road (Walking Path)
    - 22 Local Roadways
    - 23 Nelson Road
    - 24 Peach Springs Road
    - 25 Youth Camp Road
  - PLANNING AND O&MS - NOT SHOWN ON MAP**
    - Alert Weather Gauges
    - Hualapai Entrance
    - Hydrant Maintenance, Installation, Piping, & Coverage Plan
    - New HIP Homes (Water & Sewer)
    - Road Inventory, Pavement Mgmt. System & Road Program SOPs, Manuals, etc.
    - Safe Streets for All - Transportation Safety Plan
    - Safety Master Plan & Improvements (Sidewalks, ADA, Lighting, Cameras, etc.)
    - Long Range Transportation Plan
    - Water Strategy/Capital Improvement Plan
- Numbering identifies map location only. It does not indicate a project's priority or order of construction.

# Peach Springs Area Projects



12.1.25 Subject to change based on field conditions and funding. Not to scale.

**Legend:**

- WATER AND SEWER PROJECTS**
    - 1 Hualapai Water Rights Pipeline Planning Including Design and Environmental - NOT SHOWN ON MAP
    - 2 Sewer Lagoon No. 6
    - 3 Truxton Aquifer Well
    - 4 Water Storage Tanks
    - 5 Well No. 1 Piping Replacement
    - 6 West Water / Peach Springs Cross Connection
  - TRIBAL FACILITIES**
    - 7 Administration Building & Associated Infrastructure
    - 8 Pop's Laundry Facility and Ped Bridge
    - 9 Public Safety Complex
    - 10 Public Services Annexes
    - 11 Re-purpose Exit Station 1
    - 12 Transportation Complex
  - COMMUNITY RECREATION**
    - 13 Rodeo Circle Park
    - 14 Sports Complex
    - 15 Hualapai Veterans Park
  - TRANSPORTATION (ROADS, PATHS AND SIDEWALKS)**
    - 16 Baseline Roadway Maintenance
    - 17 Diamond Creek Road Overpass
    - 18 Buck & Doe Road
    - 19 Diamond Bar Road (Safety Project)
    - 20 Diamond Creek Road
    - 21 Diamond Creek Road (Walking Path)
    - 22 Local Roadways
    - 23 Nelson Road
    - 24 Peach Springs Road
    - 25 Youth Camp Road
  - PLANNING AND O&MS - NOT SHOWN ON MAP**
    - Alert Weather Gauges
    - Hualapai Entrance
    - Hydrant Maintenance, Installation, Piping, & Coverage Plan
    - New HIP Homes (Water & Sewer)
    - Road Inventory, Pavement Mgmt. System & Road Program SOPs, Manuals, etc.
    - Safe Streets for All - Transportation Safety Plan
    - Safety Master Plan & Improvements (Sidewalks, ADA, Lighting, Cameras, etc.)
    - Long Range Transportation Plan
    - Water Strategy/Capital Improvement Plan
- Numbering identifies map location only. It does not indicate a project's priority or order of construction.