

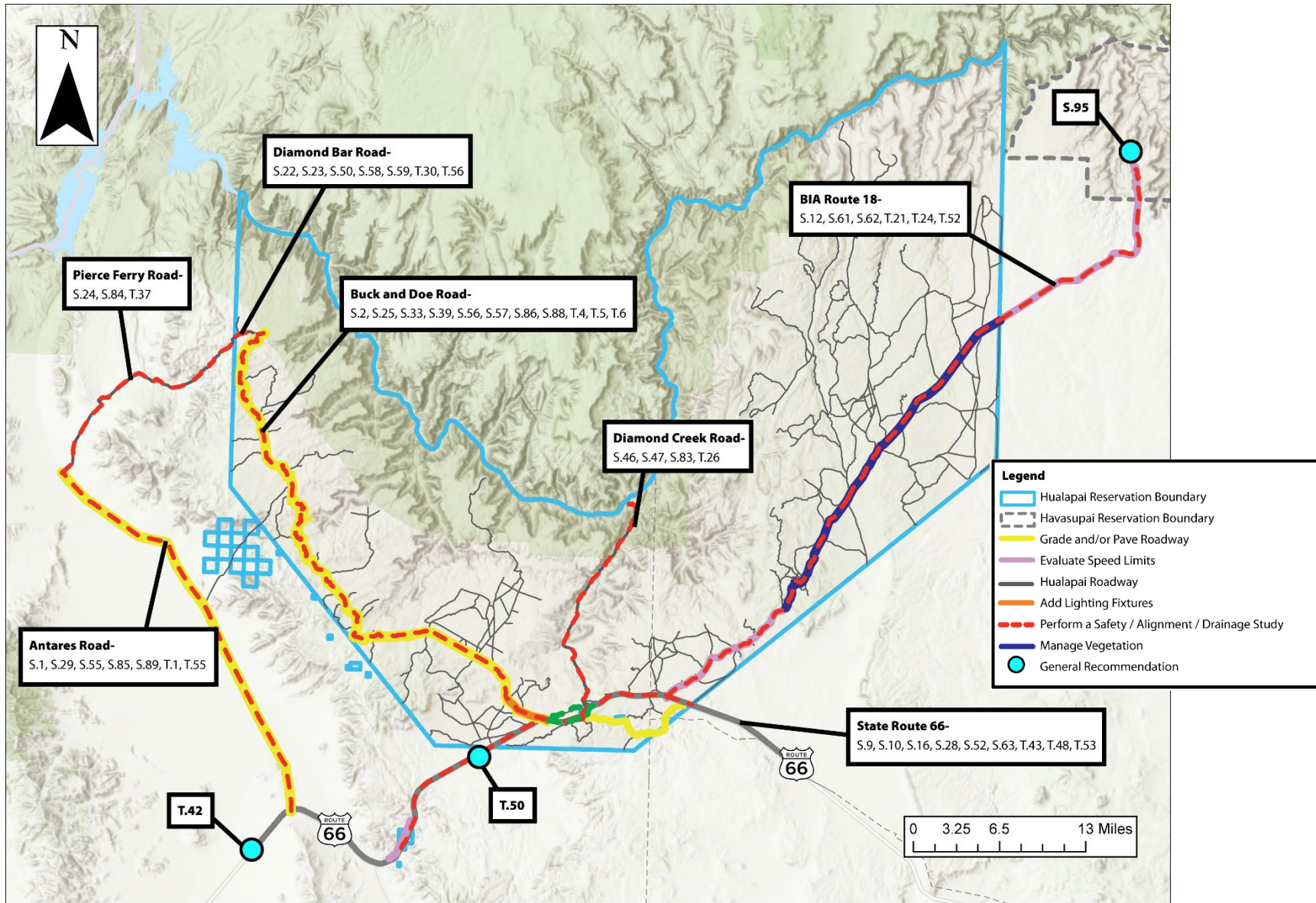
## SAP and LRTP Recommendations Review

Below is a table of recommendations that correspond to project codes listed in the Project Boundary Recommendations map

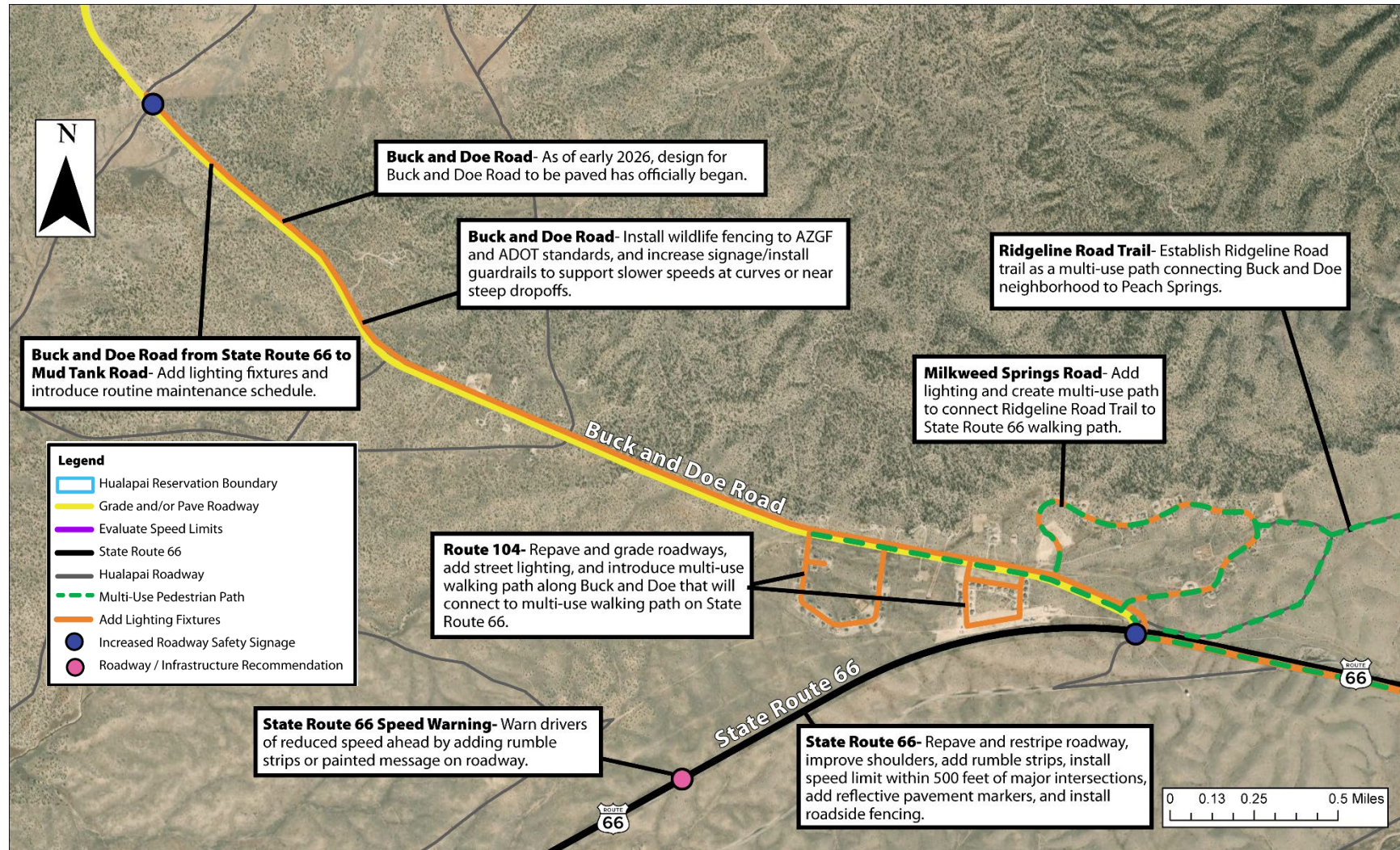
Roadway	Project Code	Recommendation
<b>Antares Road</b>	S.1	Install street lighting along roadway
	S.29	Pave and grade roadway. When paving, consider striping, established shoulders, rumble strips, raised reflective pavement markers, and drainage improvements
	S.55	Install roadside fencing to ADOT and Arizona Game and Fish (AZGF) standards
	S.85	Develop a maintenance and upkeep schedule for lighting fixtures
	S.89	Install animal crossing warning signs
	T.1	Construct shared-use path
	T.2	Conduct a drainage study to determine water flow patterns and possible culvert locations
	T.55	Introduce speed feedback signs and/or radar ticketing along roadways
<b>Pierce Ferry Road</b>	S.24	Install reflective pavement markers
	S.84	Install roadside fencing to ADOT and Arizona Game and Fish (AZGF) standards
	T.37	Conduct a roadway safety audit/study
<b>Diamond Bar Road</b>	S.22	Install reflective pavement markers
	S.23	Add rumble strips on either side of roadway
	S.50	Install chevron signs (reflective arrows) at curves
	S.58	Install animal crossing warning signs
	S.59	Install roadside fencing to ADOT and Arizona Game and Fish (AZGF) standards
	T.30	Conduct a roadway safety audit/roadway safety study along roadway
	T.56	Introduce speed feedback signs and/or radar ticketing along roadways
<b>Buck and Doe Road</b>	S.2	Install street lighting from SR 66 to Mud Tank Road
	S.25	Pave and grade roadway. When paving, consider striping, established shoulders, rumble strips, reflective pavement markers, guardrails along sharp curves, and drainage improvements
	S.33	Realign roadway at sharp curves
	S.39	Reassess need and type of signage along roadway to support slower speeds when needed
	S.56	Install roadside fencing to ADOT and Arizona Game and Fish (AZGF) standards
	S.88	Install chevron signs (reflective arrows) at curves
	T.4	Construct a shared-use path from SR 66 to Music Mountain Road
	T.5	Conduct a drainage study to assess roadway to determine water flow patterns and possible culvert locations
	T.6	Conduct a roadway safety audit/roadway safety study along roadway
S.57	Install animal crossing warning signs	

Roadway	Project Code	Recommendation
<b>Diamond Creek Road (Unpaved)</b>	S.46	Install "Rough Road Travel At Your Own Risk" sign
	S.47	Install "Do Not Enter When Flooded" sign
	S.83	Add unpaved shoulder where possible
	T.26	Conduct a roadway safety audit/roadway safety study along roadway
<b>State Route 66</b>	S.9	Install street lighting in Valentine and from Buck and Doe Rd to Juvenile Detention Center
	S.10	Develop a maintenance and upkeep schedule for lighting fixtures
	S.16	Evaluate speed limits through Peach Springs and Valentine
	S.28	Repave and grade roadway. Add striping, rumble strips, reflective pavement markers, and drainage improvements
	S.52	Install speed limit and street signs within 500 FT of major intersections
	S.63	Install animal crossing warning signs
	T.43	Construct a shared-use path with pedestrian amenities from Buck and Doe Road to Juvenile Detention Center
	T.48	Conduct a roadway safety audit/roadway safety study along roadway
<b>BIA Route 18</b>	T.53	Install freeze indicators and introduce speed feedback signs and/or radar ticketing
	S.12	Establish shoulders, rumble strips, and reflective pavement markers on roadway
	S.61	Install roadside fencing to ADOT and Arizona Game and Fish (AZGF) standards
	S.62	Install animal crossing warning signs
	T.21	Clear roadside vegetation to fence line and remove key trees that prevent sunlight from thawing ice on roadways in higher elevations (roughly above 6,000 feet)
	T.24	Reconstruct pavement with a structural overlay and restripe roadway
<b>General</b>	T.52	Install freeze indicators and introduce speed feedback signs and/or radar ticketing
	T.42	Improve pedestrian safety and visibility with pedestrian infrastructure at Valle Vista
	T.50	Rehabilitate bridges and culverts as necessary
	S.95	Work with the Havasupai Tribe to implement roadway safety infrastructure along the last 2 miles of BIA Route 18 near the parking area for the trailhead and helipad

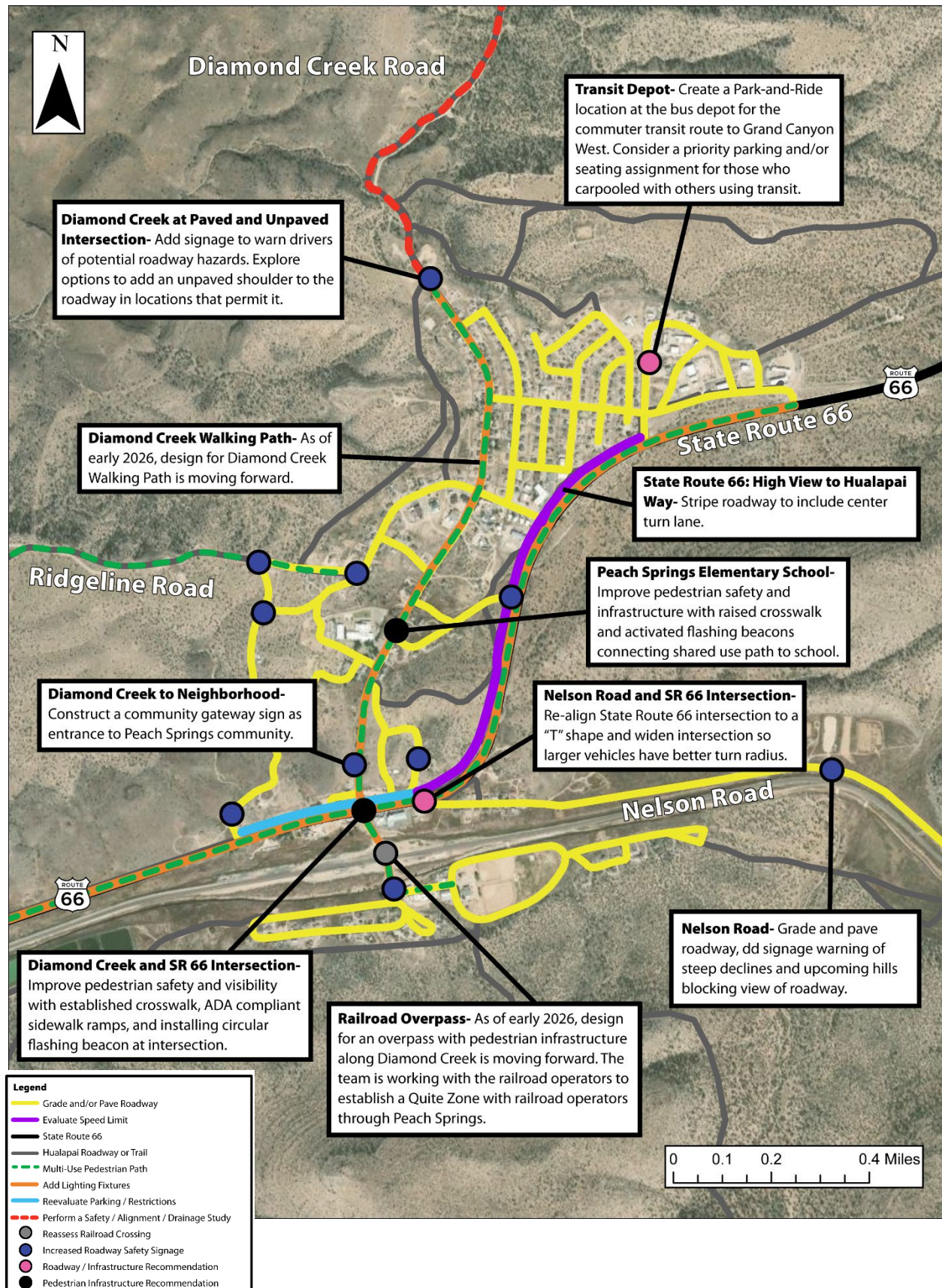
## Project Area Recommendations Map



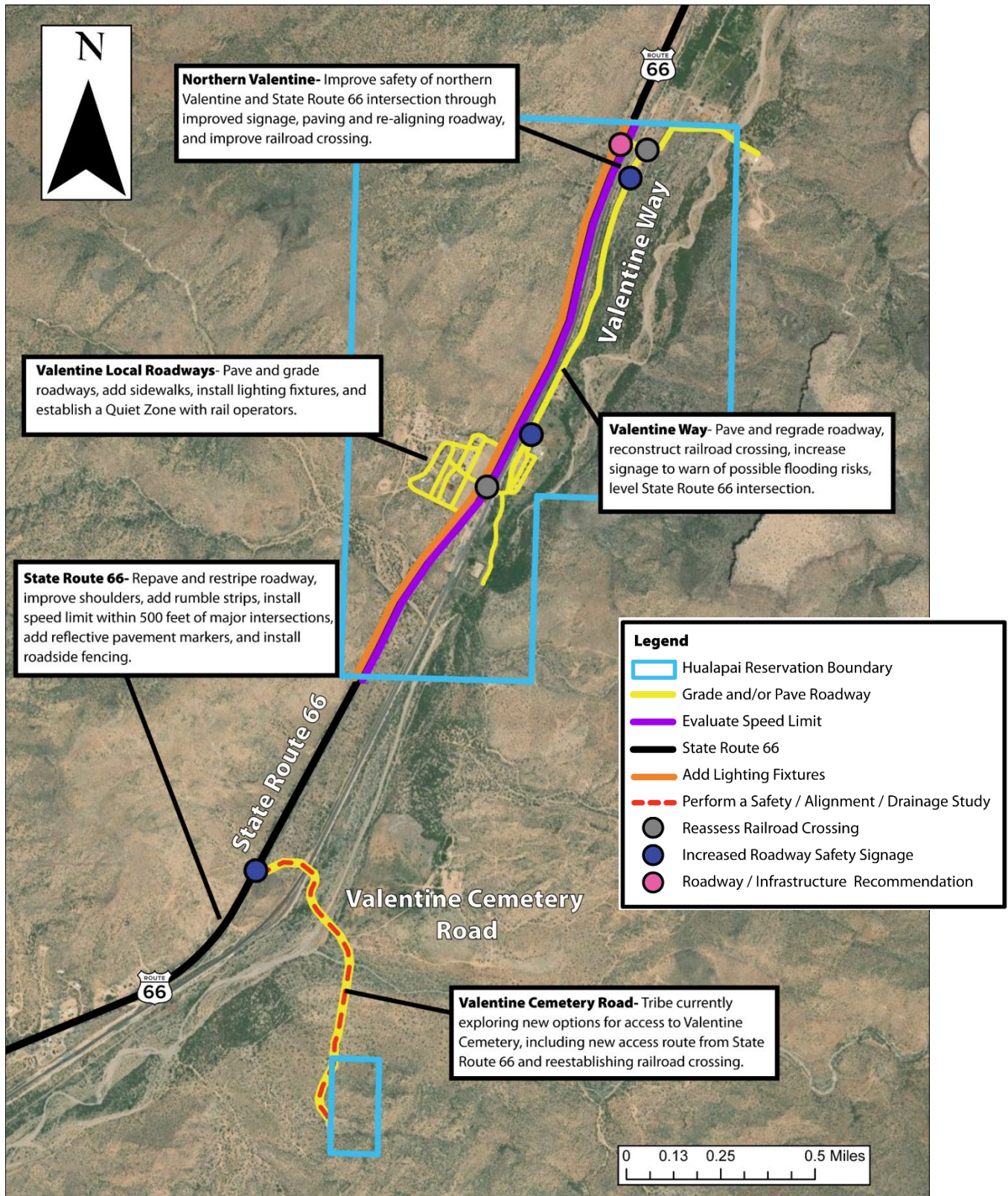
## Buck and Doe Neighborhood Recommendations Map



# Peach Springs Recommendations Map



## Valentine Recommendations Map



## Hualapai High Risk Network (HRN)

**Overview:** A High Risk Network (HRN) is the set of roadway segments with the greatest concentrations of severe crashes or crash-risk factors, identified through data-driven safety analysis. It highlights where targeted improvements will have the greatest impact on reducing serious injuries and fatalities.

### Roadways included in HRN analysis:

- State Route 66
- Antares Road
- Pierce Ferry Road
- Diamond Bar Road
- Buck and Doe Road
- Diamond Creek Rd.
- Diamond Creek Cir.
- Rodeo Way
- Rodeo Circle
- Nelson Road
- BIA Route 18
- Youth Camp Road

### Risk Factors Evaluated:

- Number of Lanes/Paved or Unpaved
- Presence of Lighting
- Railroad Crossing or Bridge/Culvert on Roadway
- Speed Limit
- Presence of Wildlife Fencing
- Crash History
- Grade (i.e., slope of the roadway)
- Roadway curvature
- Presence of locations that generate activity (e.g, Peach Springs Elementary School, Hualapai Market, Buck and Doe residential neighborhood)

# High Risk Network Map

